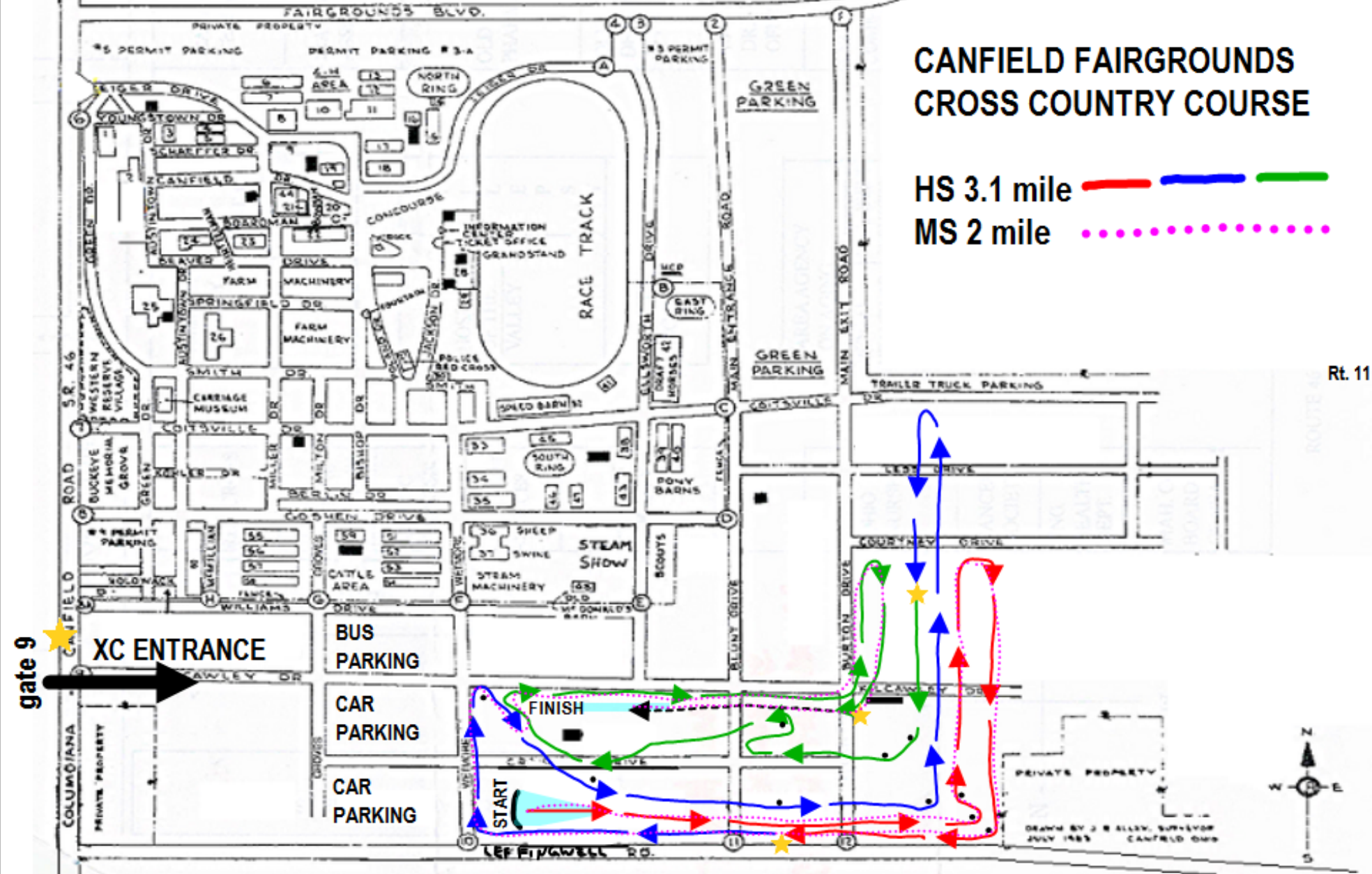


Rt. 46 north to Rt. 224 & center of Canfield

to Rt. 11 @ Rt. 224

CANFIELD FAIRGROUNDS CROSS COUNTRY COURSE

HS 3.1 mile 
MS 2 mile 



Rt. 46 south to Columbiana

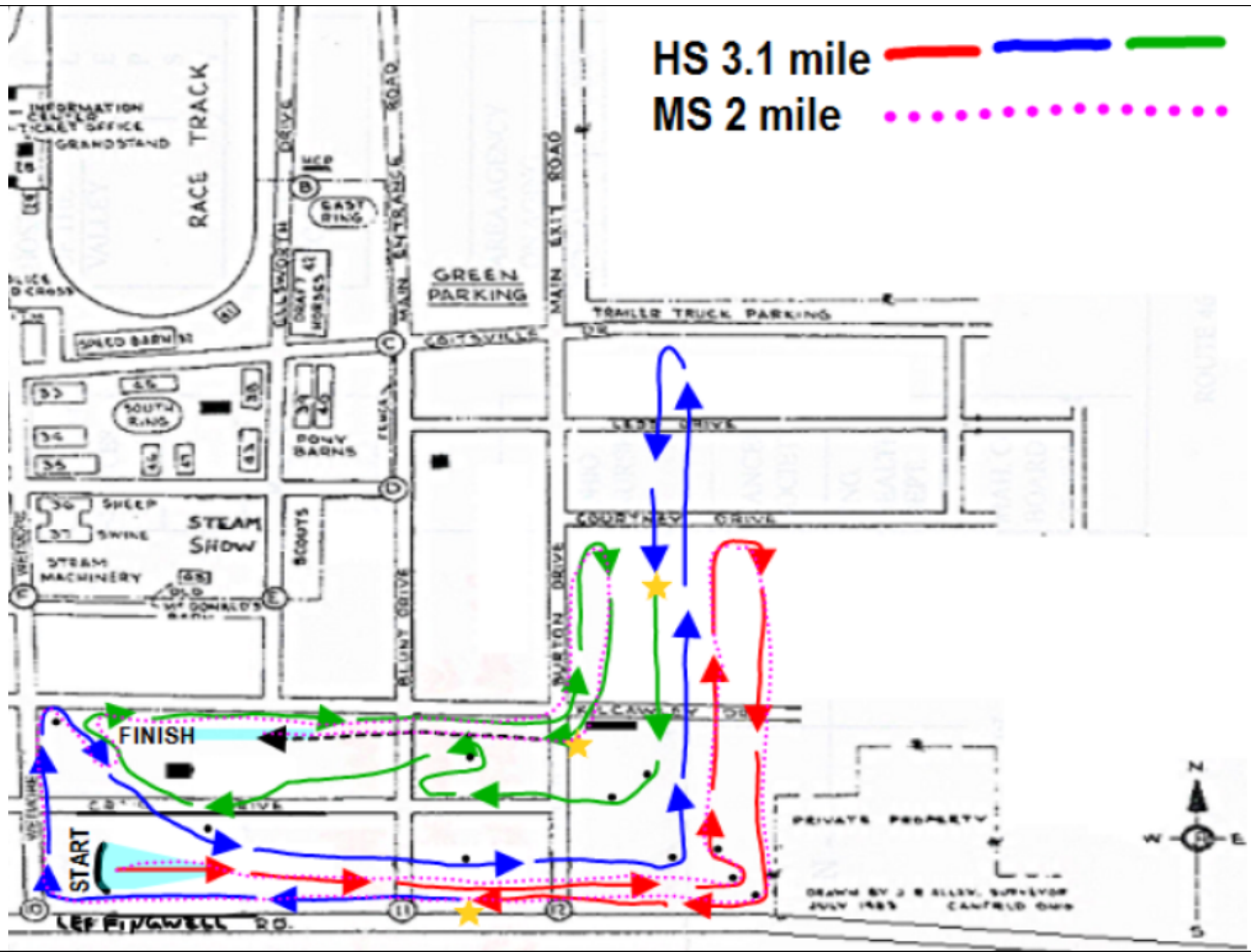
to Boardman

DRAWN BY J. B. ALLEN, SUPERVISOR
JULY 1985 CANFIELD OMS

HS 3.1 mile



MS 2 mile



HS 3.1mi



MS 2mi

